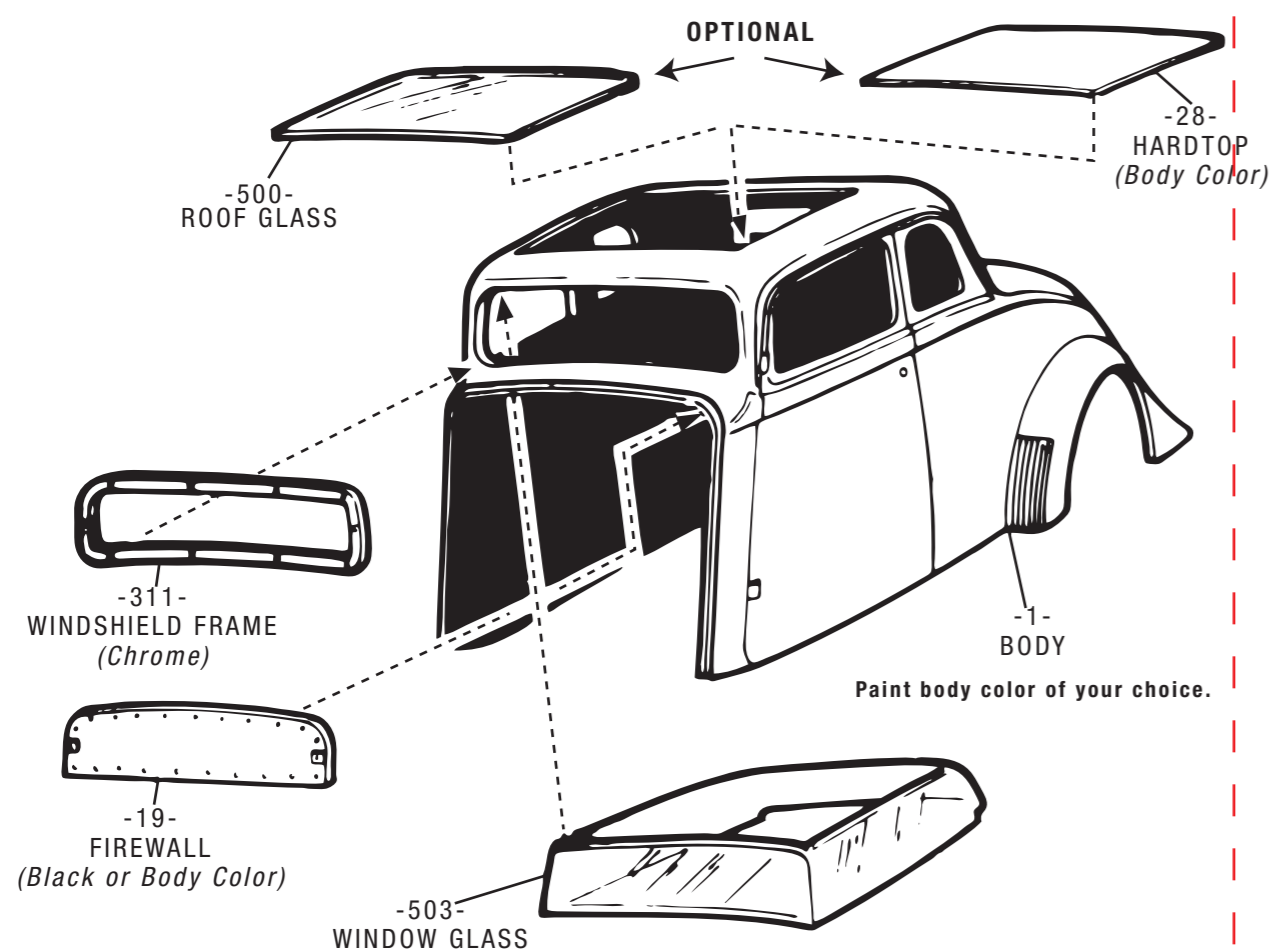
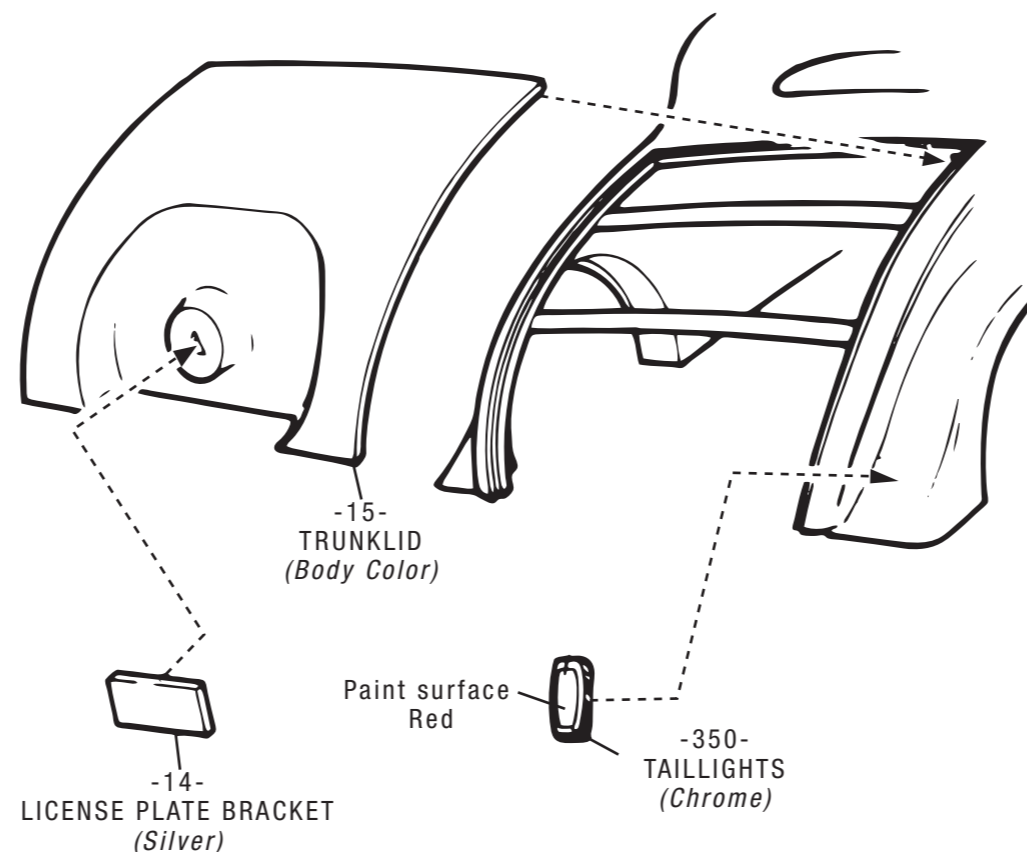


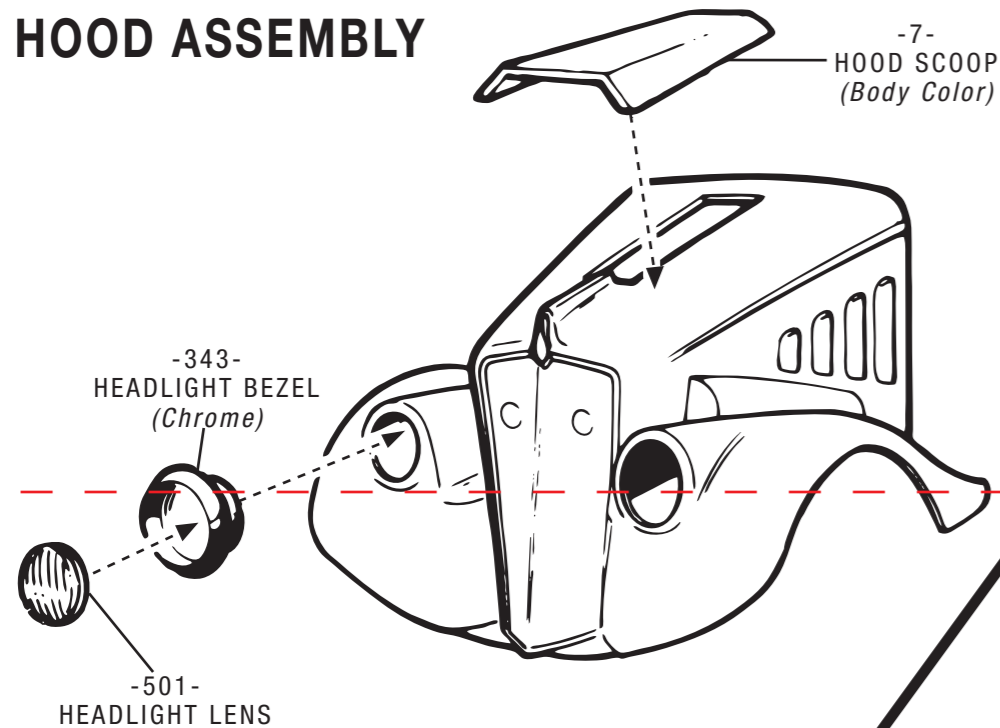
### 13. BODY ASSEMBLY 'A'



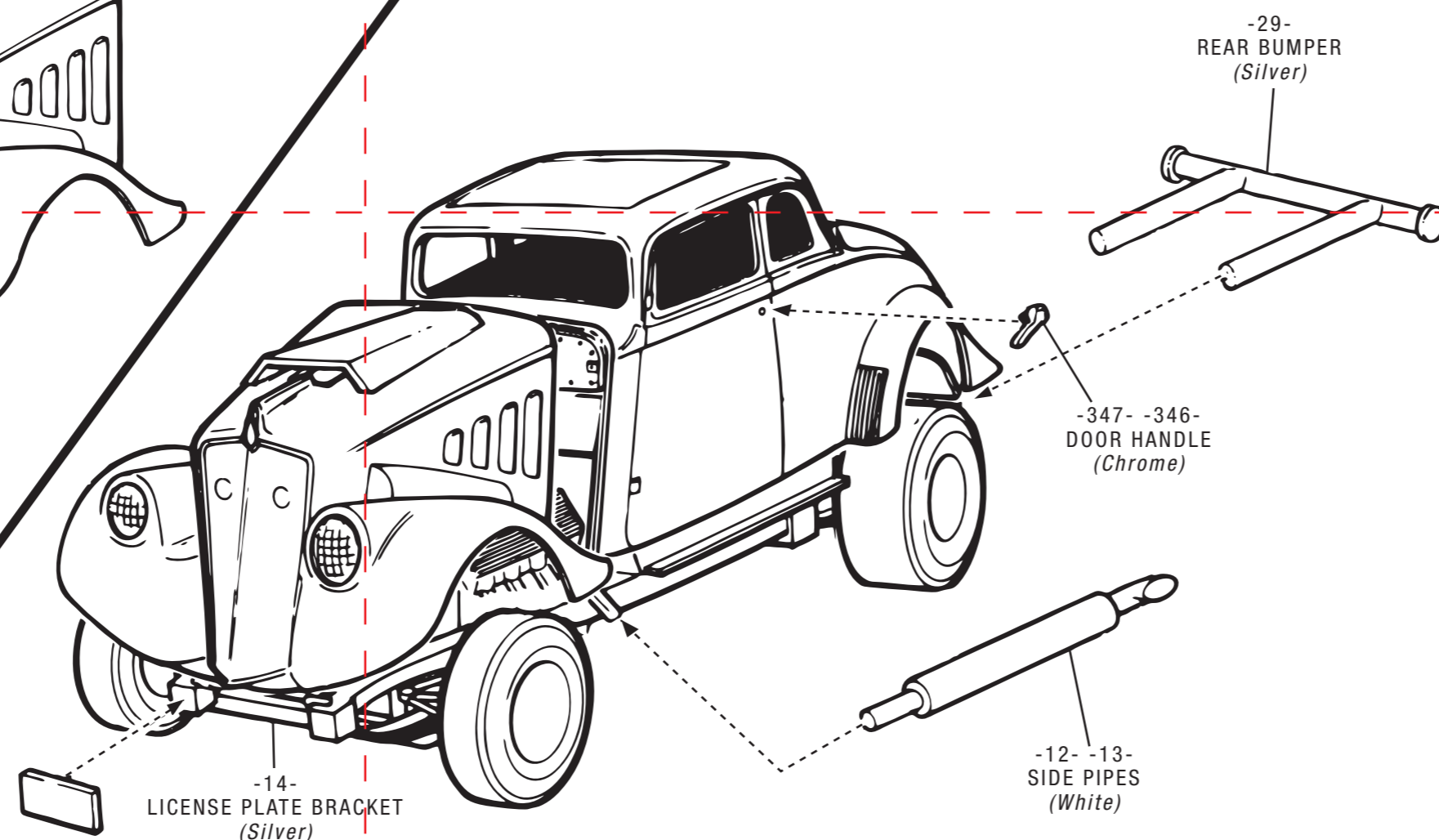
### 14. BODY ASSEMBLY 'B'



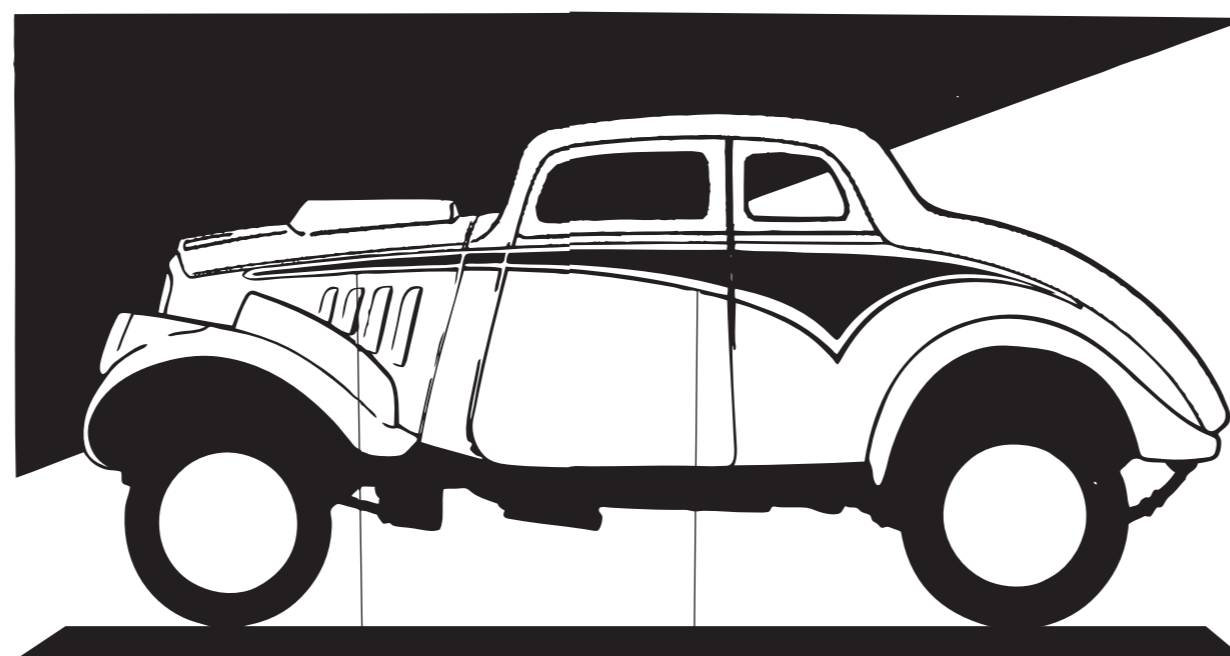
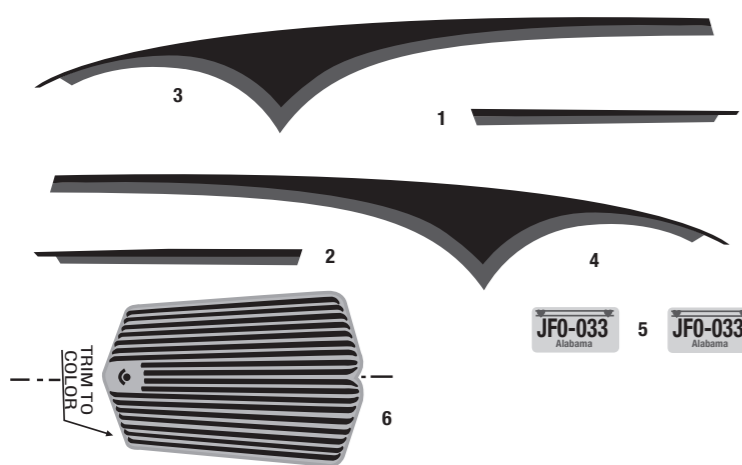
### 15. HOOD ASSEMBLY



### 16. FINAL ASSEMBLY



### DECAL PLACEMENT



Decal 2  
Decal 1 (Opposite Side)

Decal 4  
Decal 3 (Opposite Side)



1/25 SCALE  
MODEL KIT



A639-200

## '33 WILLYS COUPE

**IMPORTANT:** Before you begin to assemble your model kit, study the instructions carefully. This will help you to familiarize yourself with the part locations as you proceed. Prior to cementing parts together, be sure to "TEST FIT" them in order to assure proper alignment and also to check for excess "FLASH" that may occur along parting lines. Use a sharp hobby knife or file to remove flash if necessary.

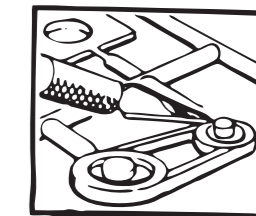
If you wish to paint your model, various sub-assemblies and components should be painted before any parts are attached. During assembly, you may note that the recommended color is stated after the part name.

This model kit is molded from the finest high-impact styrene plastic. Use only paints and cements which are specifically formulated for styrene. Read all labels and warnings carefully.

Because the cement will only adhere to bare plastic, it is necessary to remove any paint or "plating" from the area to which the cement is to be applied.

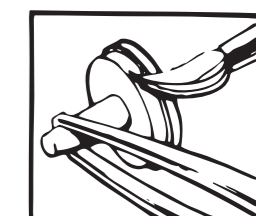
#### HOBBY KNIFE

Use a sharp hobby knife to remove parts from the trees. Some parts may appear to have an extra "tab" on them; these should be removed.



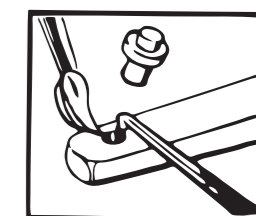
#### TWEEZERS

Tweezers are handy for holding very small parts during assembly or painting.



#### CEMENT

We recommend the use of liquid polystyrene cement. Apply with a fine brush or toothpick. Use cement sparingly or a sloppy job will result.



### BUILDING TIPS FOR THE ADVANCED MODELER

For the best possible finish, your kit should be painted, even if it is molded in color. Paint should be applied evenly, in several thin coats rather than one heavy coat. The first coat should not completely cover the surface. Each layer should be allowed to thoroughly dry before the next coat is applied. Also, each coat should be "wet sanded" using No. 1200 wet or dry sandpaper which is slightly damp; except for the final coat. Be careful not to remove any detail while sanding.

It is important to keep your hands clean when you are working with your model and always lightly sand and wash the parts before painting. This will remove any mold release agent that may have been used during manufacture, body oil from your hands, sanding residue, and dust, which is naturally attracted to plastic by static electricity. Use a mild solution of dishwashing detergent and water. Use a tack rag to dry the parts. DO NOT use paper towels or tissues, as they will leave lint on the part.

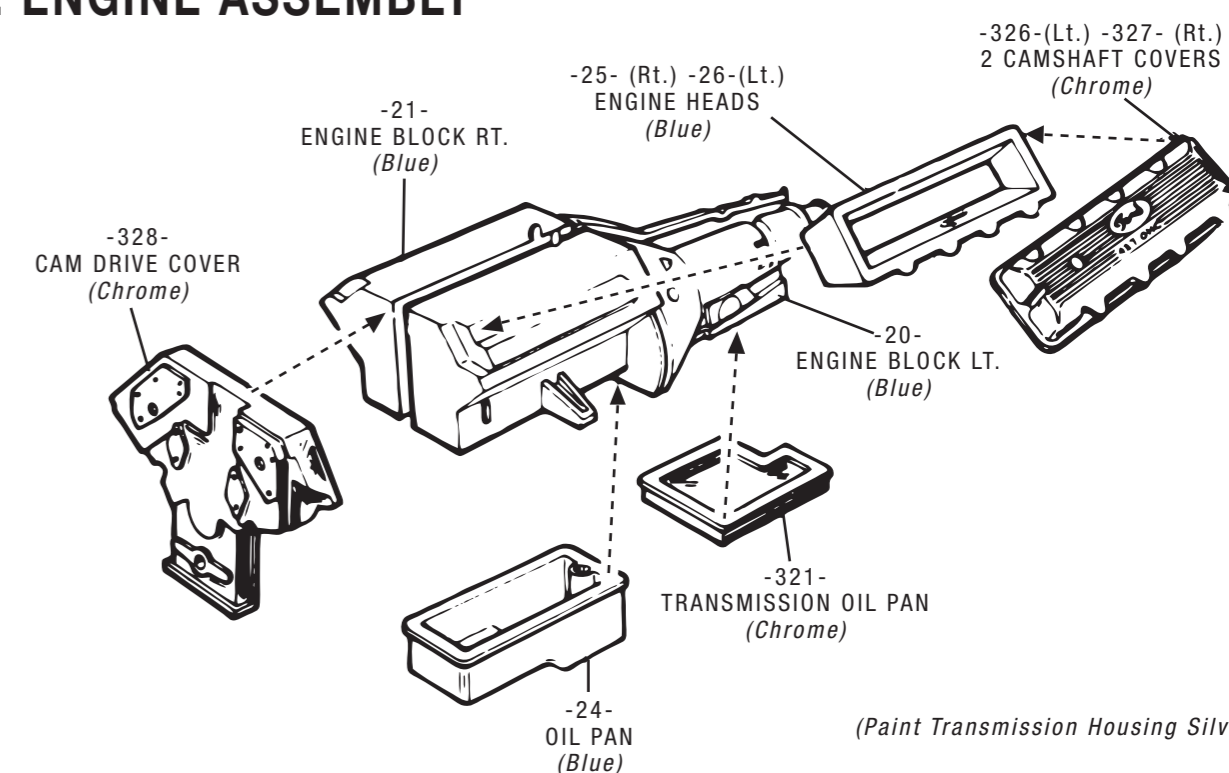
Parting lines and glue joints should be sanded or filed prior to painting and because paint has a tendency to draw away from sharp edges all sharp corners should be filed. Use filler putty designed for plastic to fill small gaps that may occur between parts, and to blend contours. This should be done only after the first or "primer" coat of paint is applied.

When painting a two-tone body, the lightest color should be painted first. Use frosted or "magic" tape to mask off the area you do not want painted. After the second color is dry to the touch, the tape can be removed. Use a very fine brush to touch up edges if necessary. If decals are to be added, do so before adding any gloss coat. A gloss coat will help even out the edges between the two colors as well as set the decals.

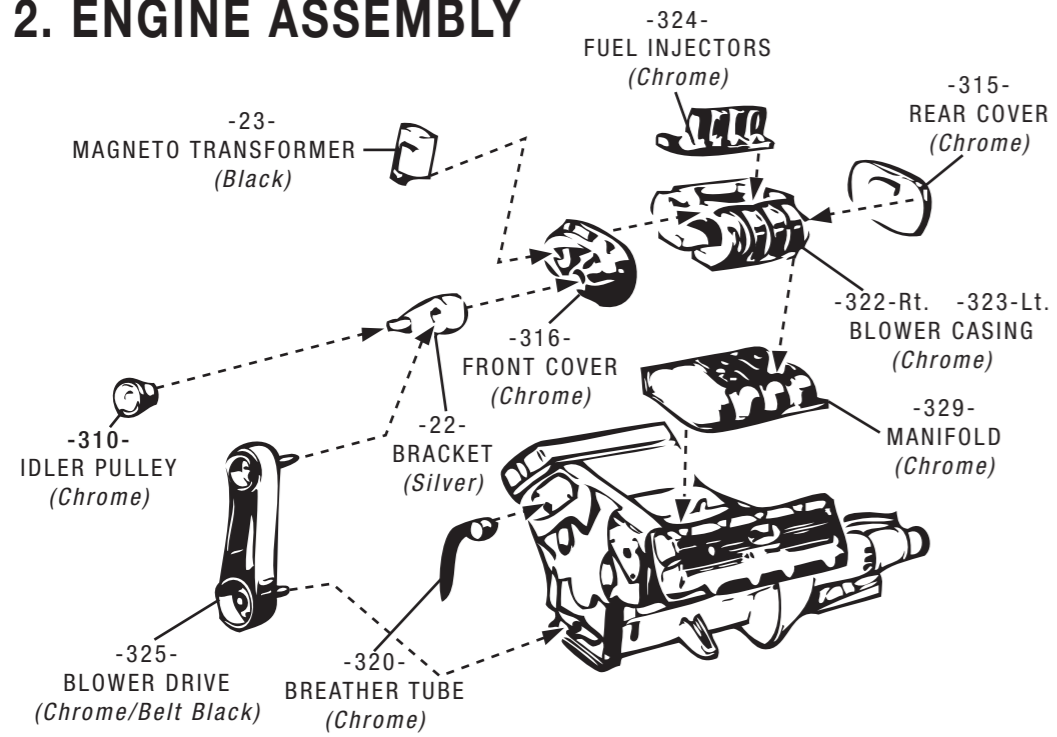
**See more great  
AMT model kits at:  
round2models.com**

Willys is a trademark of Chrysler LLC and is used under license. © Chrysler LLC 2008. Goodyear (and wingfoot design) are trademarks of Goodyear Tire & Rubber Company, Akron, Ohio USA used under license by Round 2. AMT & design is a registered trademark of Learning Curve Brands, Inc. used under license to Round 2, LLC. ©2008 Learning Curve Brands, Inc. All rights reserved. ©2008 Round 2, LLC, South Bend, IN 46628 USA. Product and packaging designed in the USA. Made in China. All rights reserved.

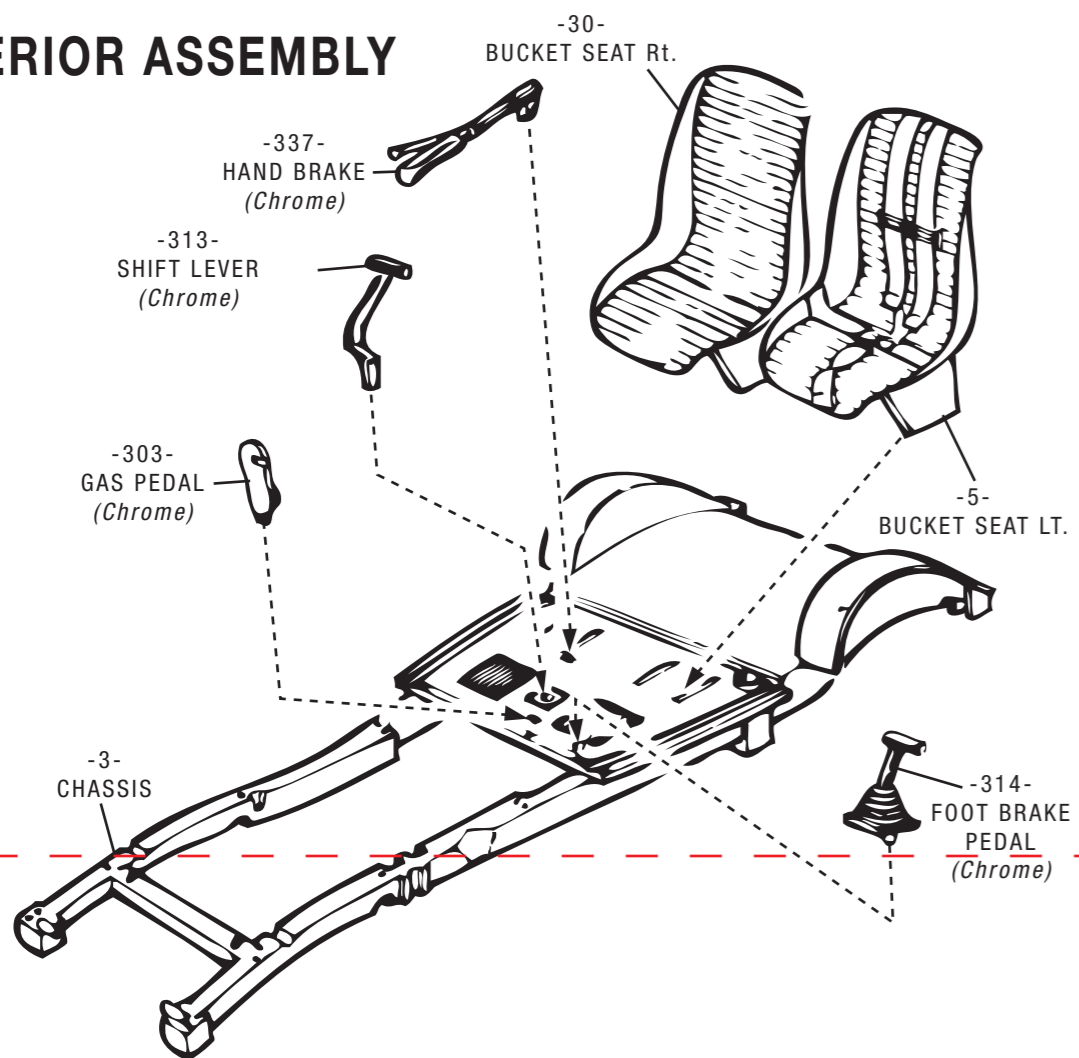
### 1. ENGINE ASSEMBLY



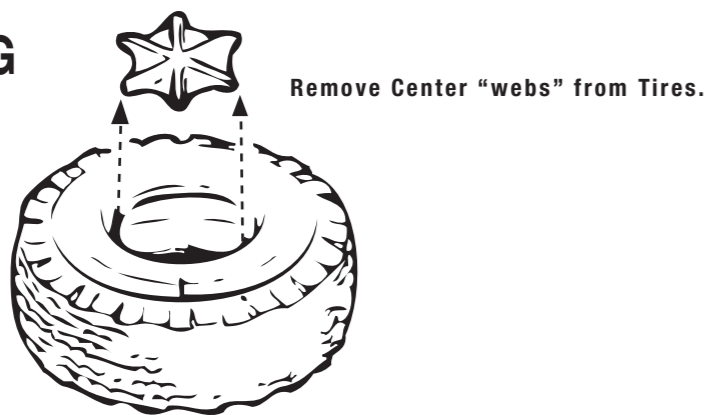
## 2. ENGINE ASSEMBLY



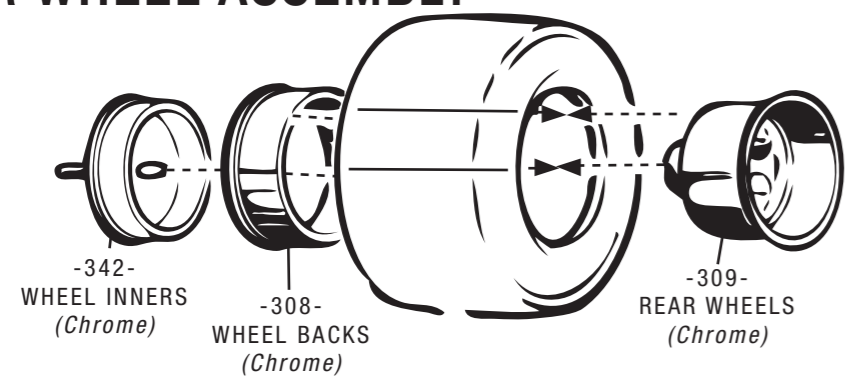
## 5. INTERIOR ASSEMBLY



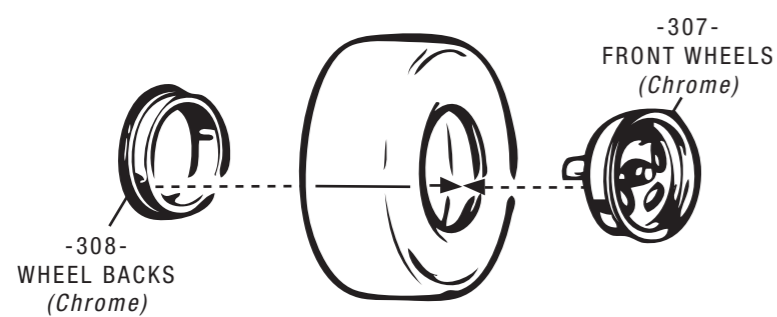
## 8. TIRE TRIMMING



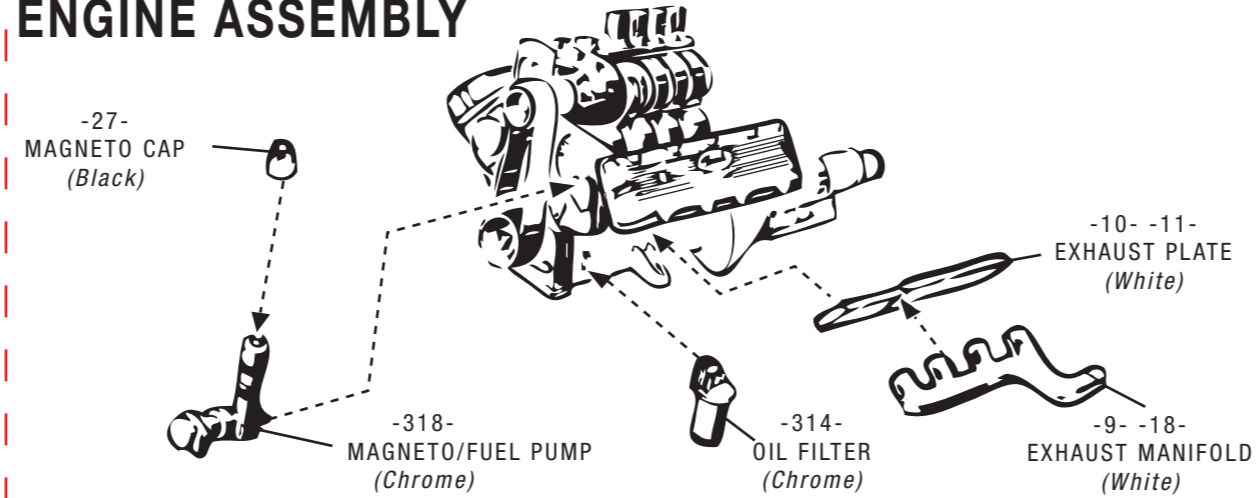
## 9. REAR WHEEL ASSEMBLY



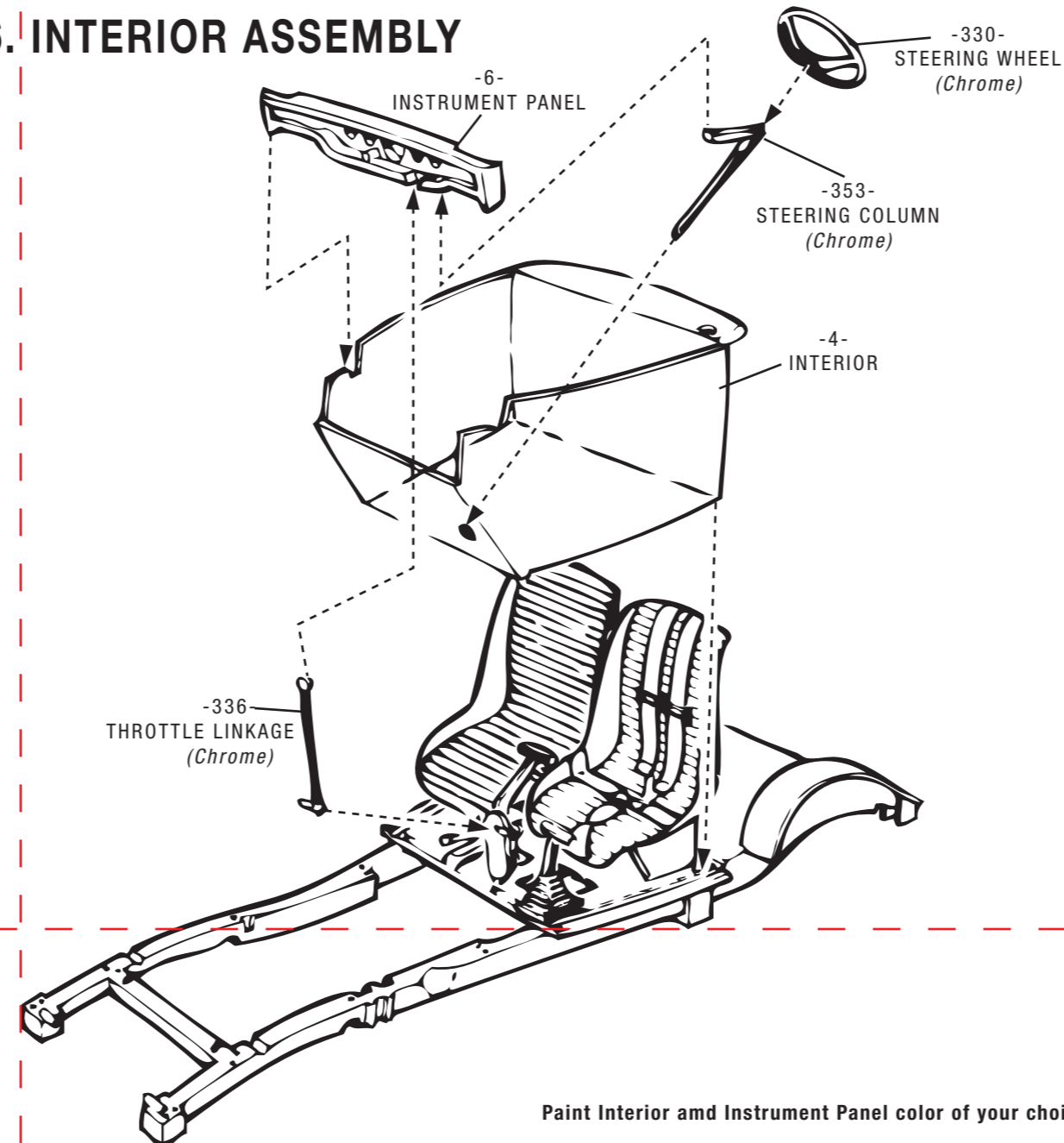
## 10. FRONT WHEEL ASSEMBLY



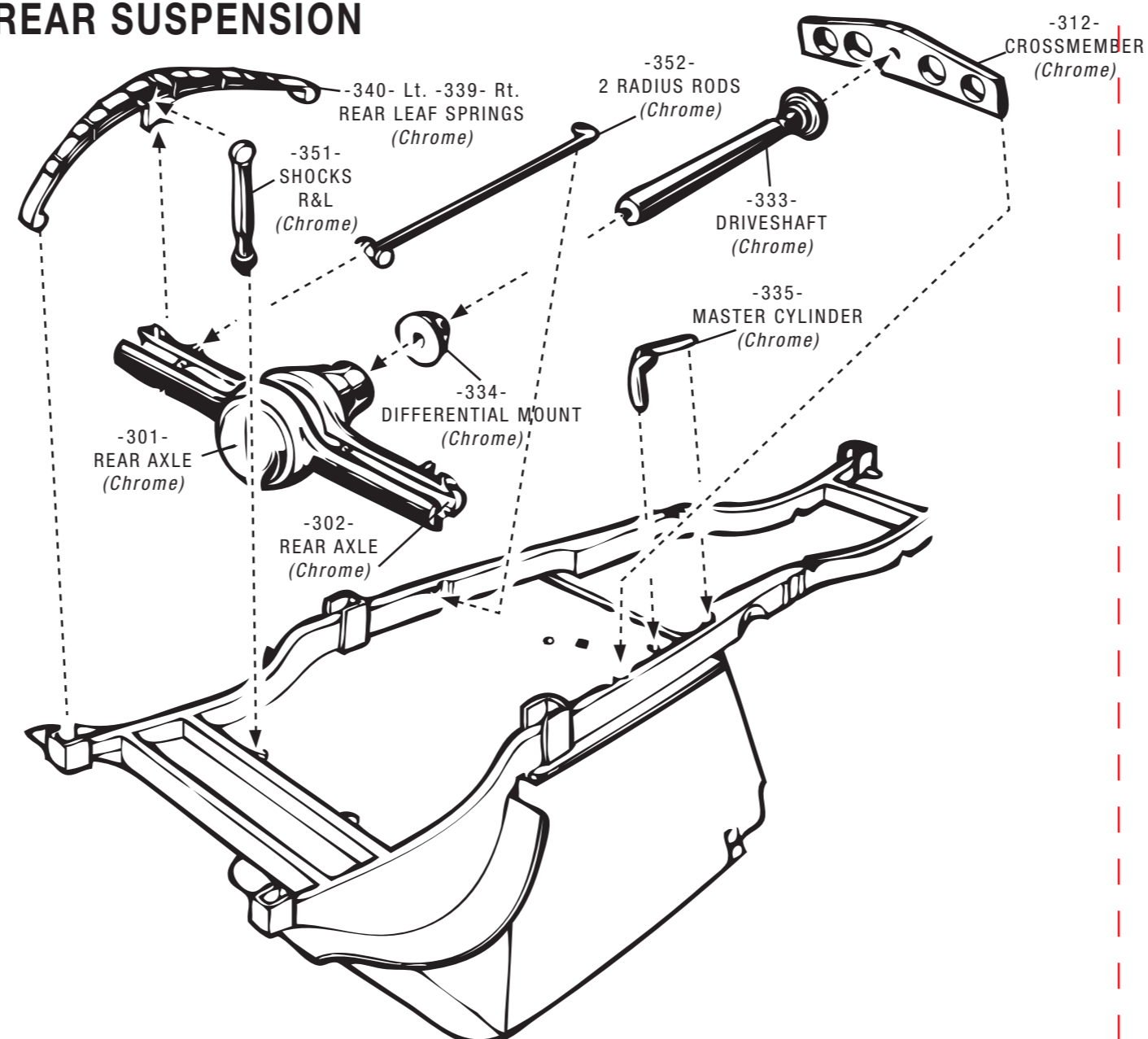
## 3. ENGINE ASSEMBLY



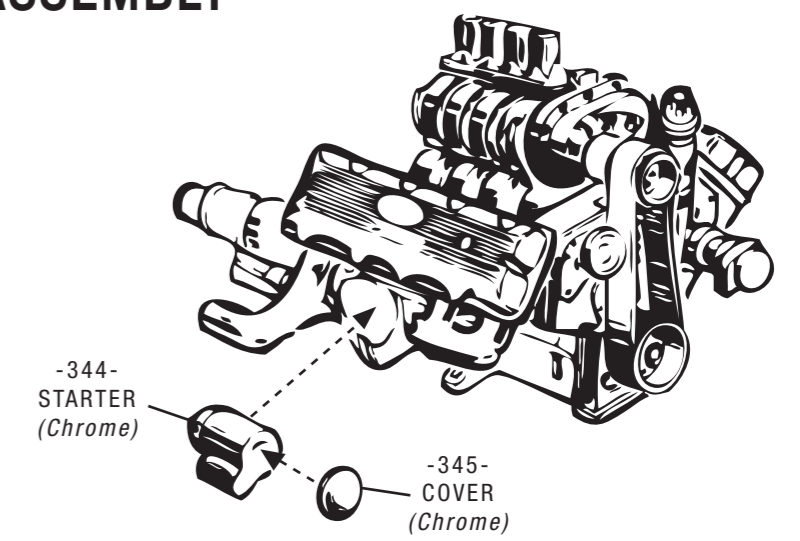
## 6. INTERIOR ASSEMBLY



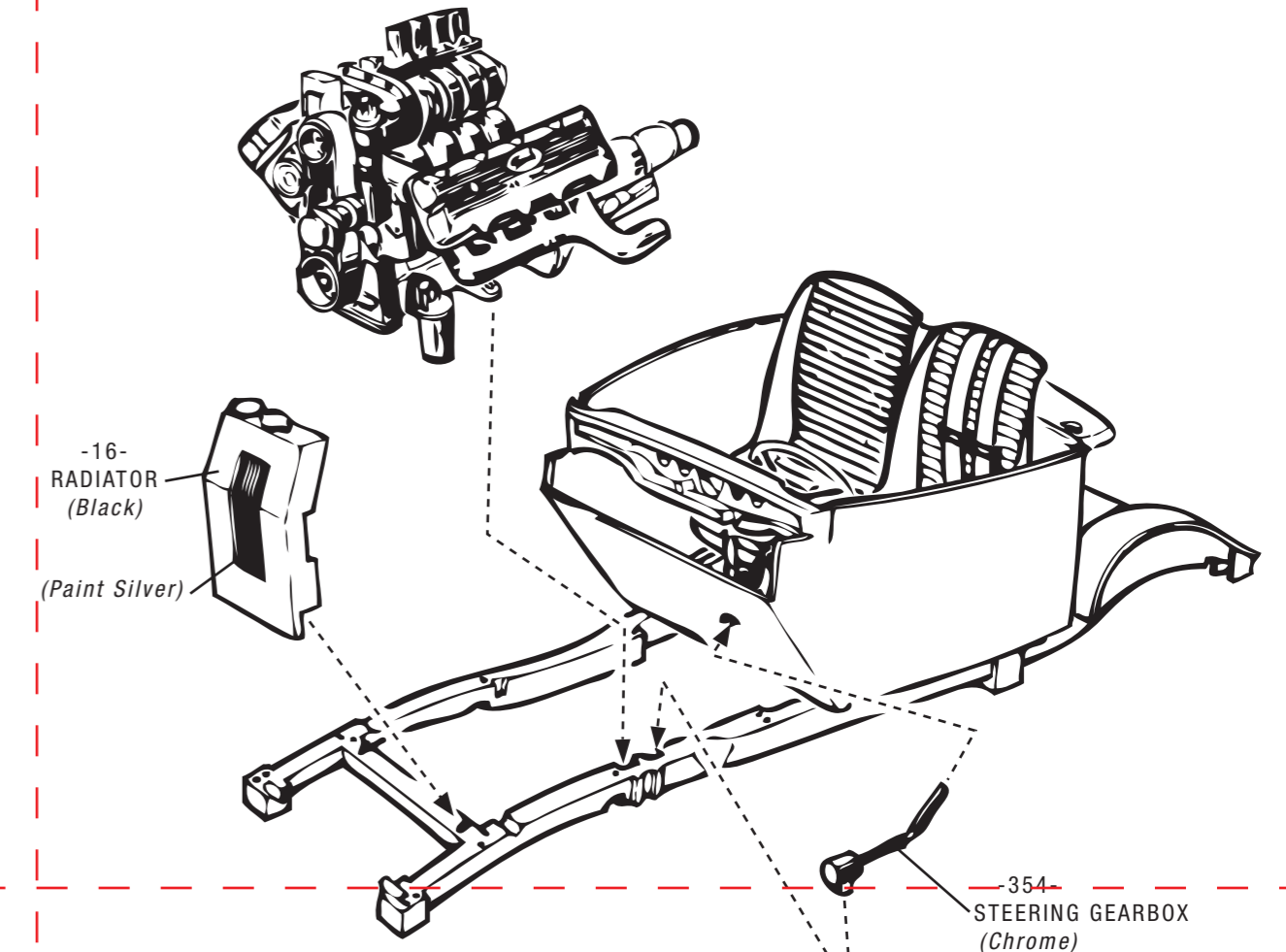
## 11. REAR SUSPENSION



## 4. ENGINE FINAL ASSEMBLY



## 7. MOTOR TO CHASSIS



## 12. FRONT SUSPENSION

